



HAWORTH®

TASK SEATING



Sit with Purpose

While human capital is every organization's greatest asset, it's also the single greatest expense. To optimize their valuable workforce, organizations seek people who find purpose in their work—and who are engaged with each other.

Knowledge workers expect comfortable and supportive environments that blur the line between life and work. And few things in the workplace evoke a stronger physical and emotional attachment than a person's chair. Good ergonomic seating also enables concentration and minimizes the distractions that stem from being uncomfortable.

Our portfolio ranges from chairs that have stood the test of time to the latest in comfort and ergonomic innovation. Let us partner with you to help maximize your investment—in your furniture purchase and your people.



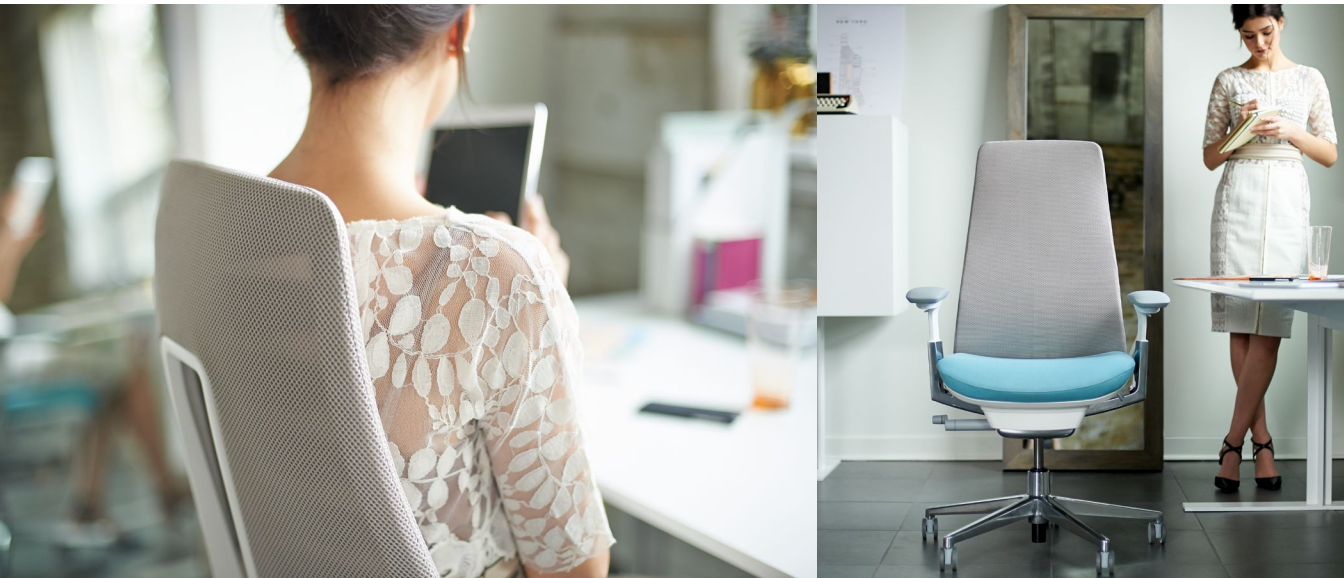
Form, Focus, Flow

We have studied the relationship between the human body and chair to minimize discomfort and promote people’s well-being—physically, emotionally, and cognitively. Through global design and development partnerships, our task chairs accommodate the range of body sizes around the world. Each was designed with a purpose, in its own form, offering choices that lead to peak performance for individuals.

The places people sit impact the body—and their ability to focus. Our commitment to the science of sitting is grounded in our history of strong design, engineering, and manufacturing—and our ergonomic expertise—to support people at work. Haworth seating is built upon three decades of knowledge and research—and rigorous testing to exceed global industry standards.

Our task seating provides the comfort people need to get into the flow (also known as the zone)—the mental state that allows for full immersion in an activity where people are highly productive and creative. When their cognitive performance is enhanced, people are more engaged, and organizations succeed.

Fern™



The pinnacle of performance. Fern provides an edgeless comfort experience to take away distractions—so you can perform your best. The Wave Suspension System™ is the heart of the chair and the key to its back comfort and flexibility, actively responding to your every movement. Its innovative, bold design delivers total back support, enveloping your body to enhance your sitting experience. Fern sets a new industry standard in comfort that has transformed task seating.





Zody®

Proven performance and comfort. A product of extensive research and development, Zody blends science-based well-being with global design and sustainability—the high achiever every office needs. Zody is intuitively adjustable, starting with the advanced features that support your lower back. The Pelvic and Asymmetrical Lumbar® (PAL) adjusts on either side of your lower back, cradling the body for maximum comfort, and fitting the breadth of your workforce. An award-winning industry leader, Zody tunes to your ideal comfort level, so you'll never feel like you're sitting in someone else's chair.





Very®

Family of seating that unites people and spaces. Very provides individual comfort and support with universal appeal in a family of seating for the entire workspace. From responsive comfort to high ergonomic performance, there's a Very chair for everyone. The task chair's intuitive lumbar support, with patented asymmetrical control and supportive mesh, enhances comfort to enable performance for a variety of tasks. Designers appreciate how the Very family of seating offers versatility in materiality choices and visual consistency in design to the office landscape.



Soji™



Thoughtful design and informed ergonomics. From the second you sit down, Soji brings your body and mind into sync—so you can enjoy healthier levels of performance, no matter where you work. Soji is a highly-adjustable task chair with more ergonomic options than most task seating in its class—without sacrificing comfort or design. Soji efficiently satisfies workplace strategies for better well-being. Employees appreciate the effortless comfort while designers love the refined color and finish options.

Our task seating portfolio ranges from chairs that have stood the test of time to the latest in comfort and ergonomic innovation. Explore the rest of our selection in ergonomic seating—X99, Lively, and Improv—to see other options for supporting your workforce and workplace strategy.

Lively

With its thin profile, nine distinct colors, and countless fabric options, Lively lets you pick a design that’s all your own—at an affordable price.

X99

X99 provides long-term seating in a task chair, complemented by a unique nesting seminar chair for visual consistency in the work environment.

Improv H.E.

The classic aesthetic of Improv provides an option for fully-upholstered seating and also includes an XL model for larger users.



Lively™

Improv® H.E.



X99®



How They Compare

A chair is a personal choice, and our portfolio offers a variety of options. All Haworth high-performing ergonomic task chairs are supported by our 12-year, 24/7 warranty, and they share a focus on environmental responsibility.



Fern



Zody



Very



Soji



Lively



X99



Improv H.E.

FAMILY OPTIONS							
Task Chair	●	●	●	●	●	●	●
Task Stool	●	●	●			●	●
Headrest	●	●	●			●	
Family Chairs Available		●	●		●	●	●
XL Task Chair							●
BACK STYLES							
Mesh Back	●	●	●	●	●	●	
Back Jacket or Upholstered	●	●	●		●	●	●
BACK SUPPORT							
Thoracic	●						
Lumbar (Asymmetrical Adjustment)		● (+ Height-Adjustable)	● (+ Height-Adjustable)				
Lumbar (Height-Adjustable)	●			●	●	● (+ In and Out)	● (+ In and Out)
Pelvic	●	●					
ARMS							
4-D	●	●	●	●	●		● (Flipper)
3-D						●	●
Height-adjustable	●	●	●	●	●		●
Fixed	●	●	●	●	●	●	●
No Arms	●	●	●	●	●	●	●
SEAT							
Seat Depth	●	●	●	●	●	●	●
Low-Position Seat Height Adjustment	●	●	●	●	●	●	●
Extended/High-Seat Height Range	●	●	●	●	●	●	●
Gel Seat Insert		●					
MECHANISM							
Back Stop/Lock	●	●	●	●	●	●	●
Forward Tilt	●	●	●	●	●	●	●
MATERIALS AND FINISHES							
Plastic Base	●	●	●	●	●		●
Aluminum Base	●	●	●	●		●	
Upholstery, Leather (Seat)	●	●	●	●	●	●	●
Upholstery, Faux Leather (Seat and Back)	●	●	●		●	●	●
SUSTAINABILITY							
BIFMA level® Certification	level 3	level 3	level 3	level 3	level 2	level 2	level 1

All task seating is manufactured in the USA. Chairs fit the 5th -95th percentile, up to 325 lbs., and ship completely assembled within a standard three-week lead time.



HAWORTH®

Haworth is a registered trademark of Haworth, Inc.
© Haworth, Inc. 2018 05.18 | Printed in the USA | Item #0487
haworth.com | 800.344.2600

Invest in Business Success

As organizations grow and evolve, changing business strategies and employee needs impact space design. Haworth is your trusted partner to help fulfill your client's workplace vision while maximizing their investment.

To learn more, visit haworth.com/taskseating.