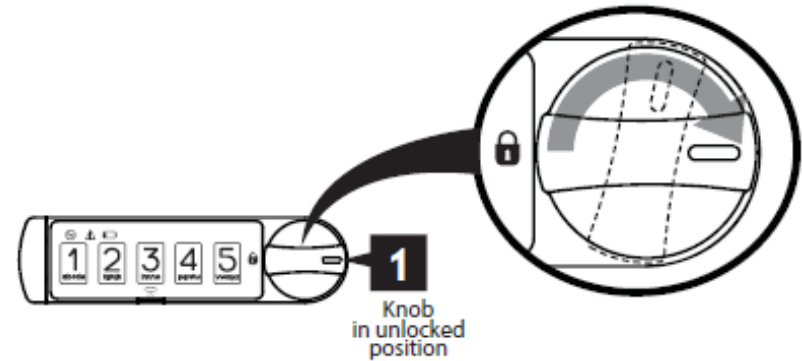




Digital Locks: Locker Mode (Operation)

STEP 1:

Turn knob to unlocked position



STEP 2:

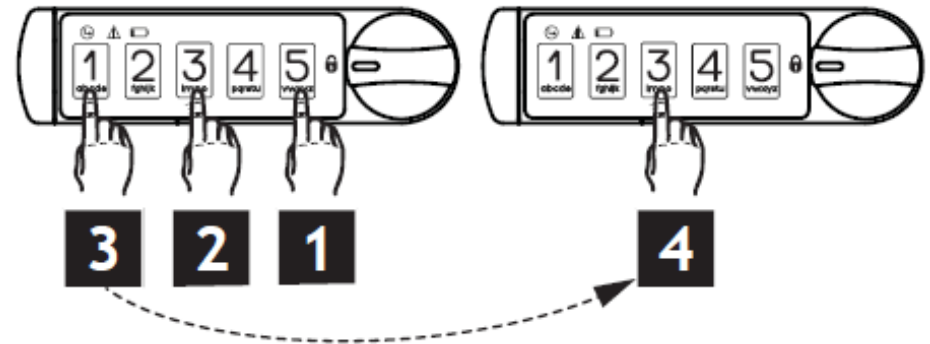
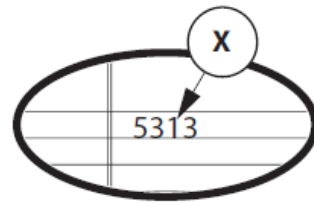
Enter 4 digit User Code (X)

NOTE: User Code (X) is an example.

NOTE:

A) The green LED will light up.

B) If the lock is currently locked with a one-time User code, the red light will blink every 3 seconds.



Digital Locks: Locker Mode (Operation)

STEP 3:

Turn knob to lock position

NOTE:

A) If you turn the knob to the locked position without entering a code or after 6 seconds, the red LED will blink 3 times and not lock.

B) The green LED will blink twice after the lock is locked.

STEP 4:

Enter code and turn knob to open

NOTE:

A) If the code is incorrect the red LED will blink 3 times. If an incorrect code is entered 5 consecutive times, the lock will not accept new codes for approximately 2 minutes and will blink the red error light 3 times if codes are attempted to be entered during the 2 minute period.

B) If the code is correct the lock will unlock and the one-time User code will be erased.

