

SPACE INSPIRED



BOS
HOLDINGS

www.bos-holdings.com

MEMBERS OF THE BOS HOLDINGS FAMILY.

MADISON

MILWAUKEE

CHICAGOLAND

ORLANDO

TAMPA



Having created thousands of inspiring workspaces for clients in corporate, government, higher education, healthcare, and hospitality, BOS is a Best in Class, Haworth Preferred Dealer with showrooms, offices and warehouses in Chicagoland, Orlando and Tampa, FL.



AOI offers the Midwest's largest inventory of new, used, and remanufactured office furniture, with an emphasis on Haworth furniture. AOI provides decommissioning, recycling and/or resale of BOS clients' pre-owned furniture. Offices and warehouses in Chicagoland, Milwaukee, and Madison.



Workspace Digital – a division of BOS – is the first full-service technology integrator and digital marketing agency in the commercial interiors industry.



For over 70 years, BOSI has been a leading Union office furniture installation firm. In addition to furniture installation, BOSI does custom applications for cabinetry, trim work and creative interior elements that blend with the architecture of the space.

Learn more about BOS Holdings & locations

[VISIT BOS HOLDINGS PAGE](#)

www.bos-holdings.com

01

Medline

Corporate Headquarters - Northfield, IL

PbD & MB Real Estate

386,266 sf

Haworth, ICF, Stylex, Nienkamper, Halcon

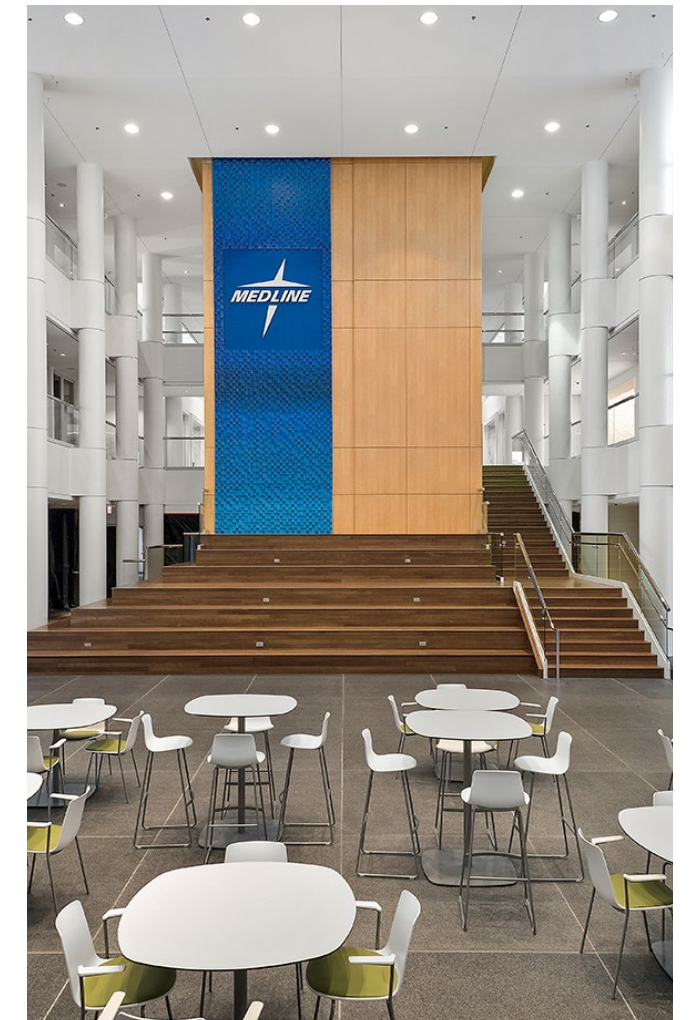


BOS worked closely with Medline to transform an existing building into a state-of-art facility providing a workspace that is invigorating and vibrant with 1464 workstations, 227 private offices and 11 director offices.

Medline is the largest privately held manufacturer and distributor of medical supplies uniquely positioned to provide products, education and support across the continuum of care. Their ability to bring best practices from one care setting to another — from large healthcare systems and independent physician practices to home health patients and their families, is what sets them apart.

“The BOS team could not have been a better partner for our space move. Their services and expertise are unmatched. We would highly recommend them to anyone looking for a new workspace.”

- Medline





02

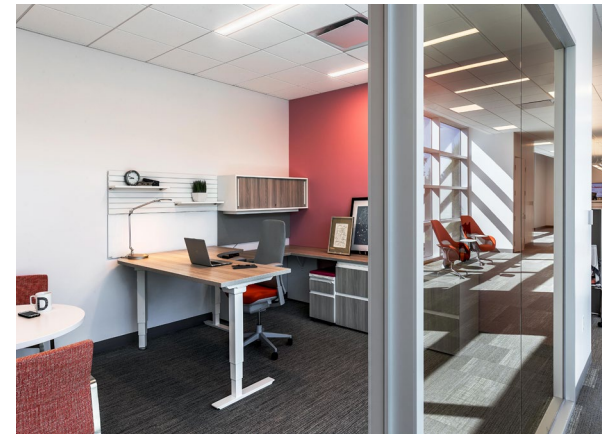
Ulta

Corporate Headquarters - Bolingbrook, IL

IA & Titan CM Solutions

200,000 sf

Haworth



BOS partnered with Ulta Beauty to renovate their corporate headquarters in Bolingbrook, IL. The 200,000 Square Foot facility featured Satellite Reception, Multipurpose Rooms, Conference Rooms, Huddle Rooms, Cafe and standard office space.

Ulta Beauty, Inc. is a beauty retailer of cosmetics, fragrance, skin care products, hair care products, and salon services. It engages its products and services in retail stores, salon services, and e-commerce.

“Ulta Beauty has been working with the BOS and Haworth teams for over 10 years... BOS and Haworth play a critical role in the evolution of our corporate offices, focused on the common goal of developing our space into the guest-centric corporate headquarters that looks and feels fresh, fun and real and accurately represents our high performance driven culture. and the Ulta Beauty brand.”

- Jamie McLaren, Ulta

03

iQor

Corporate Headquarters - St. Petersburg, FL

Mason Blau and Associates, MLE Designs, Inc., iConstructors, Lotus Design, RiMO Photo

30,000 sf

Haworth, OFS, Sit On It, Allermuir, Ideon



iQor planned a move from New York City to downtown St. Petersburg for their headquarters and engaged our team and Haworth to outfit their space. The project design team's goals were to create an open, inspiring workspace that fostered collaboration between their three floors and allowed for innovation in their rapidly changing business.

Within three months, the iQor team moved into a space using a completely modular system in Haworth's Integrated Palette, with forethought given to finish selections across the floors. Since then the space has already undergone one large reconfiguration over a long weekend – without needing any additional parts to complete.





04

Vortex Optics

Corporate Headquarters - Barneveld, WI

Zingg Design & Hoff Construction

250,000 sf

AIS Matrix workstations and offices, OFS private offices, HumanScale, JSI, OFS Brands, Urban Evolutions, Global & Claridge

Vortex Optics hired BOS Holdings early in the building design process to assist with design decisions and coordinate furniture choices and finish selections, integrating them into the design of the building. BOS Holdings installed all of the furniture in the space. The highlight of the space is the showroom that BOS Holdings designed, utilizing reclaimed wood materials to create the outdoor/lodge feel that they requested with an updated twist. We custom designed a 6,000 pound ceiling timber beam structure with 8x8 timbers sourced locally from Wisconsin. The "V" pattern with lighting gives a nod to the Vortex logo. All of the display cabinets, and apparel displays were custom designed with reclaimed materials and metals, and have burnt in Vortex logos. From the antler chandelier over the fireplace wall, to the custom coffee bar, this space gives a huge wow factor.

"I was really impressed with the level of service we received from BOS Holdings and Jessica in particular. Jessica was always friendly, prepared, and very attentive to our changing needs and ultimately came through when we needed it. I would highly recommend BOS Holdings and Jessica to anyone looking to transform a new or existing office space."

- Joe Hamilton, Owner, Vortex Optics



05

Schneider Electric

Nashville Hub - Nashville, TN

Gresham, Smith & Partners, MG Design, Tac Roberts

140,000 sf

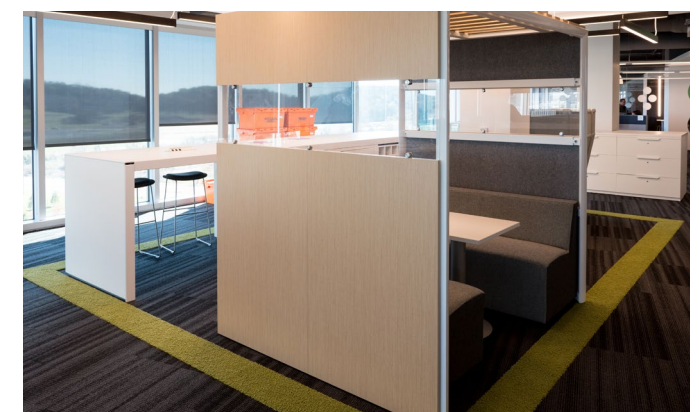
Haworth, OFS Brands, Dauphin

Since 1986, BOS started working with Square D Company in Palatine, IL. Since then, BOS has facilitated the furniture installations for Schneider Electric acquired companies throughout the US, Canada and Mexico. BOS and Schneider Electric have a standing relationship throughout a national reach, working successfully for over 26 years. Featured in this showcase is their updated Nashville, Tennessee office.

Schneider Electric is a leader in energy management and automation systems in homes, buildings, data centers, infrastructure and industries, with global presence in over 100 countries.

“The BOS Team has been servicing our needs from new projects, to reconfigurations, redeployment of our own products and service work, no matter how large or how small, BOS always makes our needs a high priority.”

- Schneider Electric





06

Autoweb

Tampa, FL

Create+Co, Rubicon, Photos by Seamus Payne

12,000 sf

Haworth, Haworth Collection, Andreu World, HBF, Global, Davis

When Autoweb decided to move from the suburbs to an iconic downtown Tampa building, Rivergate Tower, they envisioned a workspace that reflected their brand and culture. As a leader of technology in the automobile business, their executives wanted to ensure the new space was strong on place identity and would align with their strategic goals for innovation in their industry. Our team worked closely with the interior design team of Create+Co to maximize the potential of this workplace within this split-level suite with riverfront and park views.

A generous number of collaborative settings with a residential feel were provided that were identifiable and welcoming to workers. The open feel and low separations reinforce Autoweb's collaborative workstyle. The use of Haworth Collection, a major supplier of leather to luxury car brands like Ferrari and Lamborghini, as well as luxury interior furnishings, stylishly closed the loop on the connection between their space and culture.



07

Featured Law Firm

Chicago Office - Chicago, IL

Hines, DRI, Gensler, Clune Construction

200,000 sf

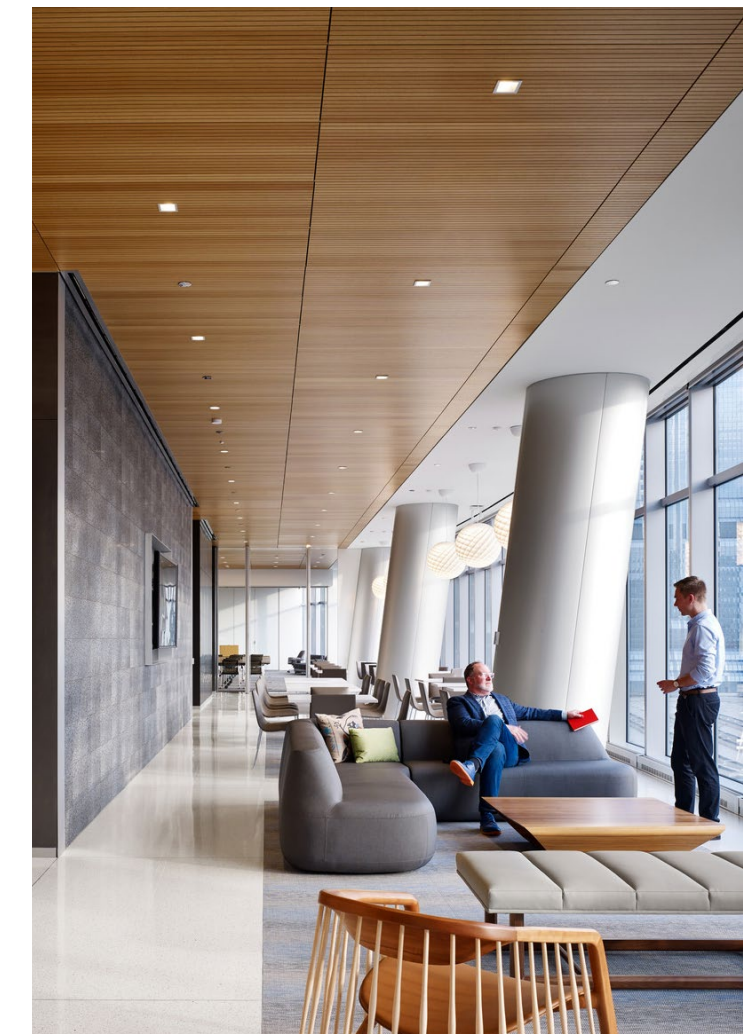
Halcon offices & conference tables, Wilkhahn seating

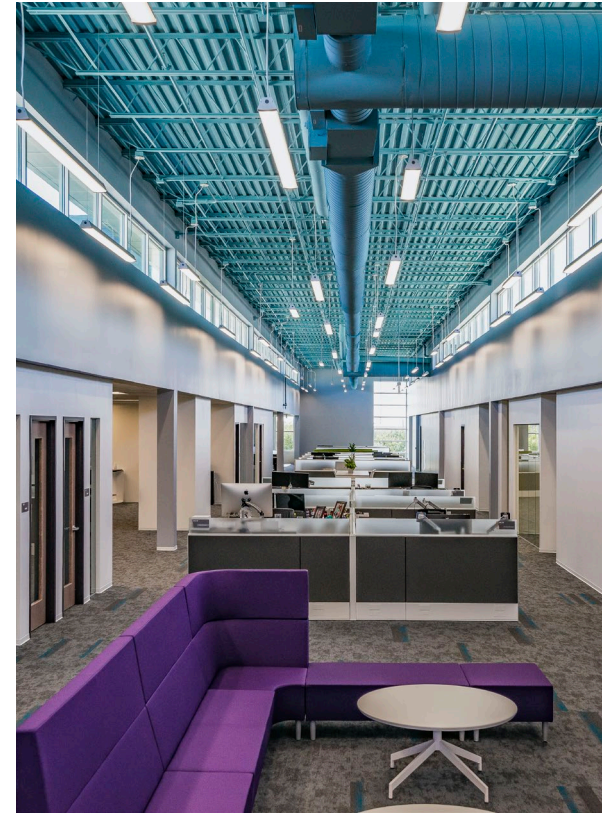


BOS partnered with a law firm to create a workspace encompassing ancillary furniture and Partner offices over 7 floors in Chicago's premier new construction high-rise on the Chicago River. Photo Credit: Steve Hall © Hall+Merrick.

The scope includes lounges on each floor and full amenity floor for reception, conference, training and dining with a variety of imported European designer furniture.

The client is a global law firm with lawyers located in more than 40 countries throughout the Americas, Europe, the Middle East, Africa and Asia Pacific, strategically positioned to help their clients with legal needs. Typical clientele range from multinational, Global 1000, and Fortune 500 enterprises to emerging companies developing industry-leading technologies.





08

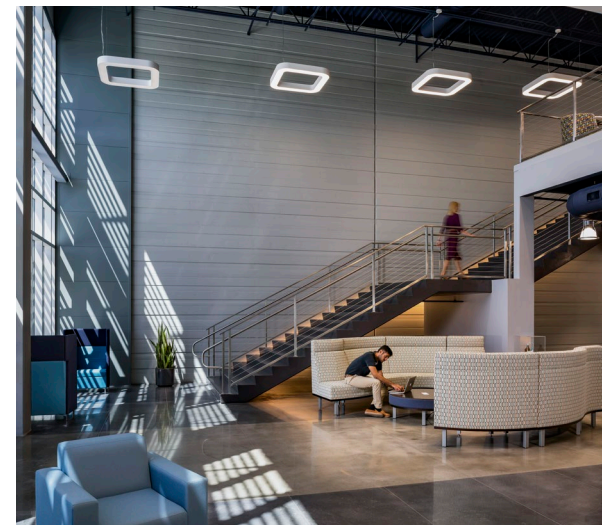
Metrohm

US Headquarters - Riverview, FL

HTG Architects, iConstructors, RiMO Photo

65,000 sf

Haworth, JSI, Global, ERG



As a global manufacturer of laboratory instruments for chemical analysis, Metrohm USA wanted to ensure their new Riverview facility encouraged future growth and innovation, while staying true to their brand and unique office culture. A group of employees from many departments used the knowledge shared by Haworth and our team to create a design which facilitates collaboration in their new workspace.

One of the strategies for supporting employees was to focus on the needs of each department, and personas were created that informed all the design decisions. The strategy included using one standard workstation size from a kit of parts, but then customizing each department's layout and features to fit those team's workstyle. In addition, the project team embraced the idea of managing this change by involving the entire office in the process. Their marketing team created videos with executives, and scheduled tours during construction to share the progress with everyone.

By applying these strategies and involving their team throughout the process, Metrohm USA has created a facility that will allow them to adapt to change in the future, and to continue to lead their industry.

Peapod

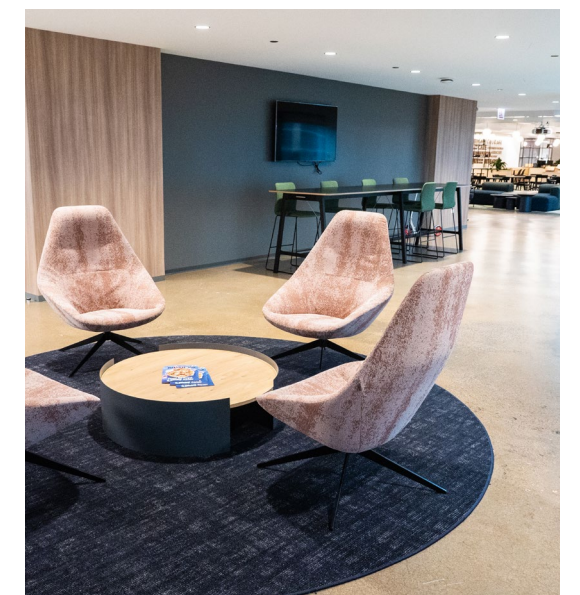
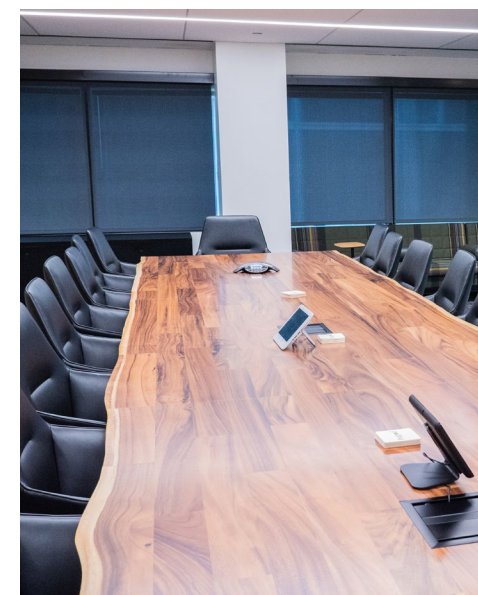
Headquarters - Chicago, IL

Partners by Design, Reed Construction, Colliers, CBRE

53,000 sf

Haworth Workstations, Task Seating and Walls

Peapod's goal was to pull together several local suburban offices to create a centralized corporate headquarters in the city. This project was fast-paced and on a very tight budget. BOS assisted the client and their designer to find the right mix of product to achieve their functional, aesthetic and financial goals.





10

Booking.com

Salt Lake City, UT

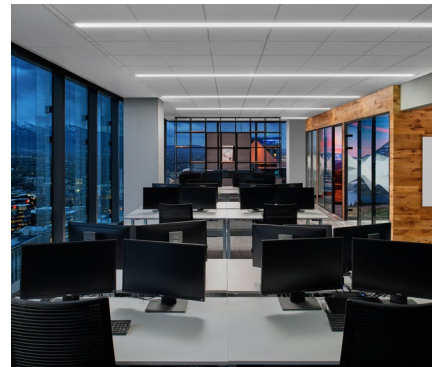
HOK Tampa, Photos by Seamus Payne

6,000 sf

Haworth, OFS, Allermuir/Senator, Great Openings, Source International, JSI, ERG, Magnuson Group, Watson

Booking.com has a mission to empower people to experience the world. For the renovation of their Salt Lake City office, the project team worked together to create unique experiences within their open workspace and collaboration zones.

The unifying features of the wood walls, along with graphics and local photography, helped to drive the design intent of the furniture and fabrics. From the shared collaborative area with beautiful mountain views, to conference rooms designed around National Park images taken by their employees, the Booking.com SLC office has created a strong place identity for their growing team.



Consulting Firm

Chicago Office - Chicago, IL

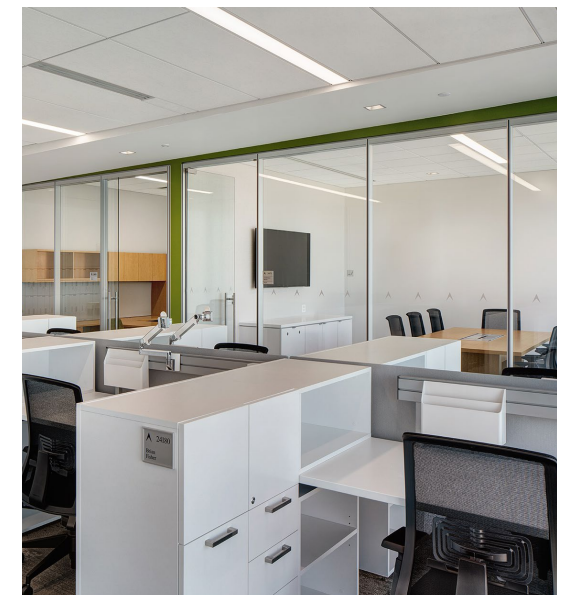
IA, Cushman Wakefield (Broker & PM) & Skender Construction

120,000 sf

Haworth/AIS stations, OFS offices, Haworth task & conference seating, Stylex ancillary

BOS partnered with a business consulting firm to relocate their Chicago HQ to a premiere, new construction office building along the Chicago River.

In the last two years, BOS has installed furniture for this client in (19) cities in the United States ranging from 120,00 sf complete all new offices (Chicago) to providing remanufactured/new blended solutions for call centers in South Dakota, as well as decommissioning services for several offices throughout the United States. We have also partnered with the client to find resources for coordinating their new London, England and Utrecht, Netherlands locations.





12

Akerman

Dallas Office - Dallas, TX

Staffelbach & The Spencer Company

27,277 sf

Haworth, Davis, Datesweiser, Allseating, HBF, Allermuir, Keilhauer, Martin Bratrud, Cumberland

BOS partnered with Akerman LLP to expand their downtown Dallas office into an entire new floor in the Trammel Crow Center. The new space reflects a contemporary, professional aesthetic with 43 paralegal and attorney offices, 12 admin stations, 5 formal conference rooms, a cafe and a collaborative space with Haworth's Workware technology.

Akerman is a client-driven enterprise, recognized by Financial Times as among the most forward thinking law firms in the industry.

"It's been our pleasure to work with the BOS team; from planning stage to installation - they gave their 100%. Their attention to detail and their willingness to go "above and beyond" attitudes has been outstanding at every turn of our projects. Our rep, Angel Shawver, has not only taken the time to listen to our needs, but has also provided feedback in areas where we can all improve as a collaborative team. Keep up the outstanding job BOS, we at Akerman truly appreciate it."

- Akerman



13

Private Equity Firm

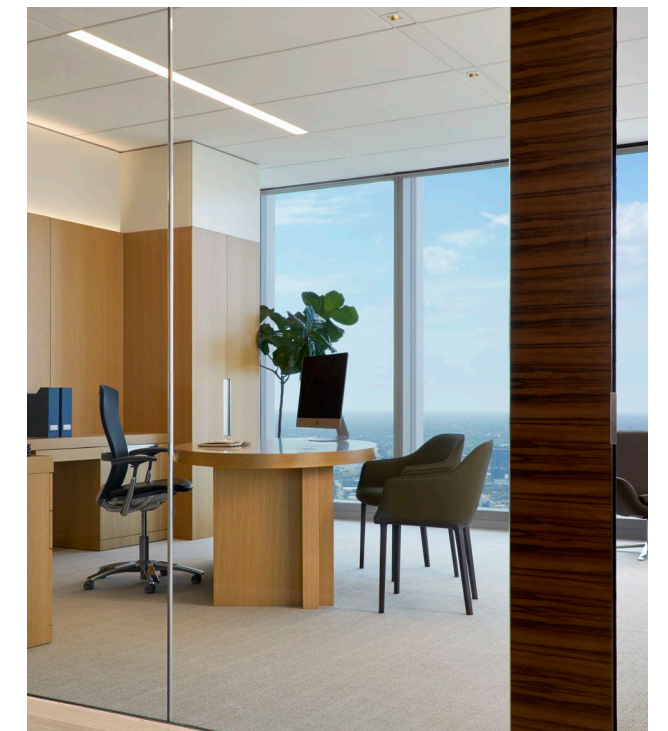
Corporate Headquarters - Chicago, IL

Gary Lee Partners

Haworth systems and offices, Touhy Conference tables/
credenzas, Stylex conference chairs and ancillary products

BOS, the client, and their chosen A&D firm partnered to design & furnish a stunning contemporary interior with one goal in mind - "create a workspace you love!"

Our client is a Chicago-based private equity group focused exclusively on leveraged investments in middle market healthcare and life science companies.





14

Fiskars

Corporate Headquarters - Middleton, WI

Kee Architecture

108,800 sf

AIS, OFS, JSI, Allermuir and Urban Evolutions



BOS Holdings was hired to provide design and space planning services prior to furniture planning. We worked closely with Fiskars' Design Team and their partners to create a space that was reflective of Fiskars' great heritage. BOS Holdings then provided all furniture within the space, carefully selecting pieces that would be as classic as the orange handles on their scissors. We installed 268 workstations, 67 Private Offices, as well as furniture and soft seating for the Break Rooms, Training Rooms, Conference Room furniture, Labs and Mail Room. The result is a striking, timeless and functional workspace that Fiskars is thrilled to call home.

"Jessica Pagel at BOS Holdings has successfully taken on this project and has yet allowed Fiskars to have full control of the outcomes. I know that this has been anything but a simple project and having her as our partner has certainly made the entire process less daunting than I originally imagined. Jessica is truly an incredible professional and I have more than enjoyed the time well spent with her and BOS Holdings on this project"

- Emily Lyle, Fiskars

Suncoast Credit Union

Tampa, FL

Hepner Architects, Creative Contractors Inc., RiMO Photo

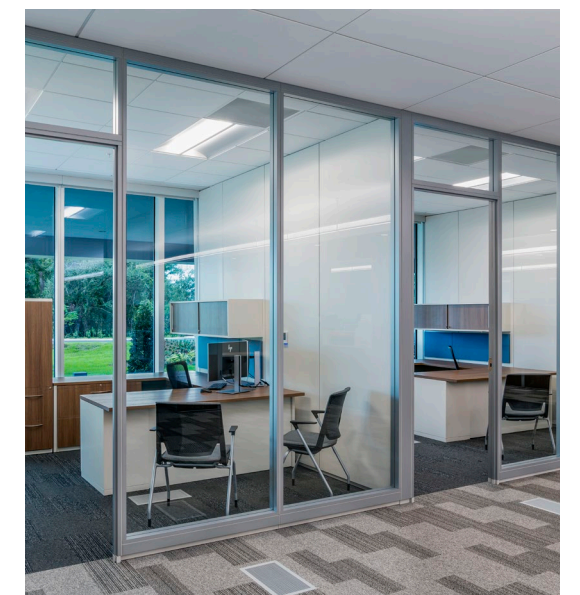
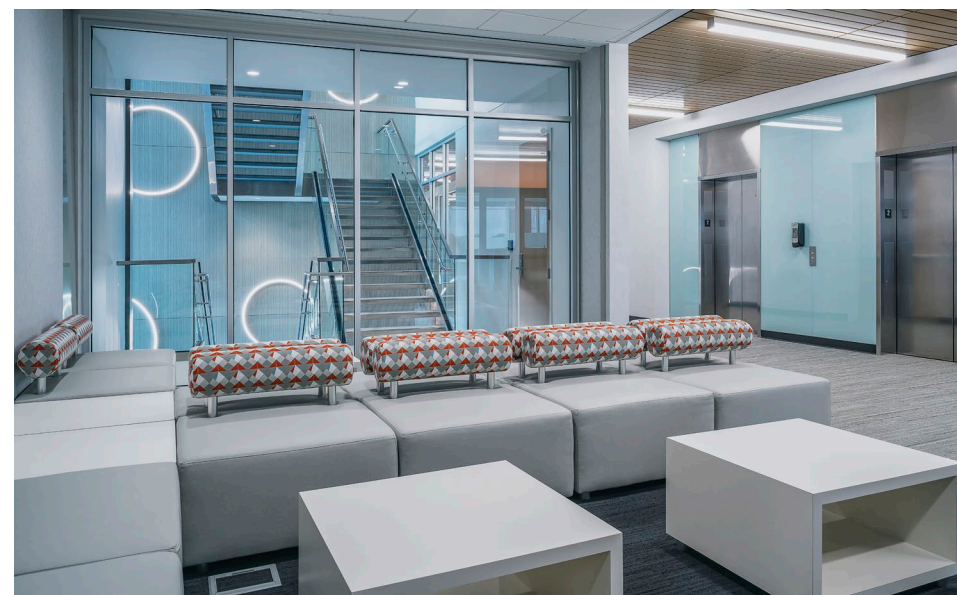
90,000 sf

Haworth, Haworth Collection, Segis, ERG

Suncoast Credit Union has been a long-term partner of Haworth and our team, and because of that strong relationship our team understood how this new building's design should support their needs. Their business involves rapid growth and their primary focus is on facility performance to support their members. By utilizing a completely flexible build-out with Haworth's moveable walls, raised access flooring with HVAC and utilities underneath, and modular furniture pieces, their facilities team is able to re-organize and expand growing departments without affecting operations.

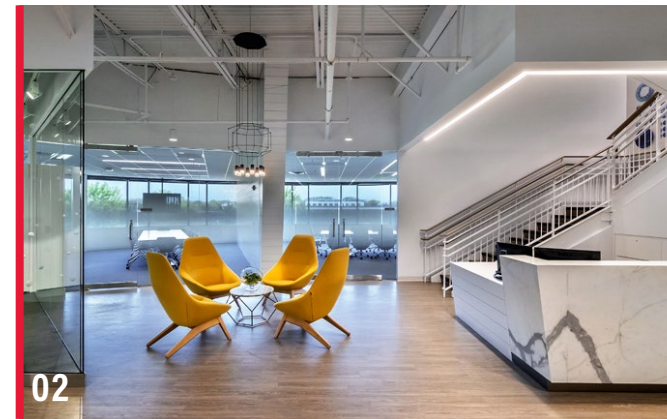
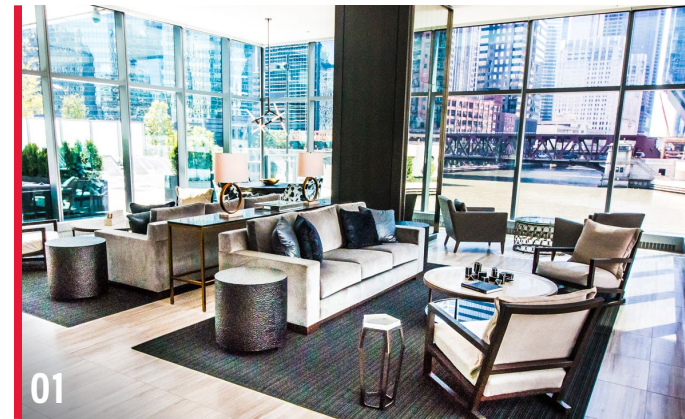
In addition, the circular lights in the stairwell and accent colors used throughout reinforce their re-branding and was a focus of the design team in the interiors. All team members in the building have access to daylight and views, along with a peaceful courtyard for rest and recharging during the workday.

All of this ties back to Suncoast's mission of improving the quality of their member's lives in building trust and respect, along with maintaining a strong and innovative credit union.



PROJECTS

- 01 WOLF POINT WEST
Chicago, IL
- 02 WILTON BRANDS
Naperville, IL
- 03 ILLINI CENTER
Chicago, IL
- 04 FLORIDA DIGESTIVE SPECIALISTS
St. Petersburg, FL
- 05 COLLABORATE MD
Orlando, FL
- 06 ACCESSO
Orlando, FL
- 07 ORGANIC VALLEY
Cashton, WI
- 08 ENTERPRISE
Oak Brook, IL
- 09 RAILWAY SUPPLY GROUP
Elmhurst, IL
- 10 MVP STAFFING
Deerfield, IL
- 11 RUSH COPLEY
Aurora, IL
- 12 HONEYWELL AEROSPACE
Clearwater, FL



Take video tours of BOS workspaces and hear from our satisfied clients.

VISIT OUR SHOWCASE PAGE

www.bos.com/showcase

PAST & CURRENT CLIENTS





INSPIRING
WORKSPACES
FOR OVER
70 YEARS

IN HOUSE. IN CONTROL.

01 QUICK STATS

- Celebrating over 70 years in business
- Haworth's 1st dealer partner
- Consistently in Haworth's top 10-15 dealers since 1948
- Top AIS dealer: Consistently in AIS's top 1-3 dealers since 2005
- Haworth Best in Class distinction several times since inception in 2012, to include present classification.

02 SOLID FINANCIALS

- We are financially sound and consistently profitable with offices in Illinois, Wisconsin and Florida.

03 360° SERVICES

- All of the services we provide are in-house and controlled by BOS Holdings – we do not outsource any of our services (with the exception of Chicago Code electrical installation)

04 SPECIALIZED TEAMS

- To maximize every aspect of your move and your space, we are proud to offer specialized expertise including in house union installation, walls, digital marketing agency and technology integration.

05 EMPLOYEE OWNED

- We are ESOP 100% employee owned and every employee has a vested interest in performing at the highest levels.





NEXT STEPS

Our team of experienced workspace consultants are ready to discuss the latest workspace trends and technologies. No matter where you are in your space decision process, it is always valuable to stay tuned in. If you are interested in a tour of any one of our locations, please let us know. Also be sure to take advantage of our move checklist - your guide to remembering everything for your next move. Get your copy at www.bos.com/checklist



More Online at www.BOS-HOLDINGS.com

HEADQUARTERS

501 South Gary Ave
Roselle, IL 60172
877.267.0267

CHICAGO

328 South Jefferson Street
Chicago, IL 60661
312.670.8530

ORLANDO

200 Technology Park
Lake Mary, FL 32746
407.805.9911

FBI TAMPA

1600 E Eighth Ave. C-201
Tampa, FL 336-5
727.773.5825

MADISON

1954 S Stoughton Rd.
Madison WI 53716
608.442.0430

MILWAUKEE

W136 N4829 Campbell Drive Unit 1
Menomonee Falls, WI 53051
262.777.2000