



WOLF POINT WEST
LUXURY APARTMENTS

FEATURED WORKSPACE

NTIMES

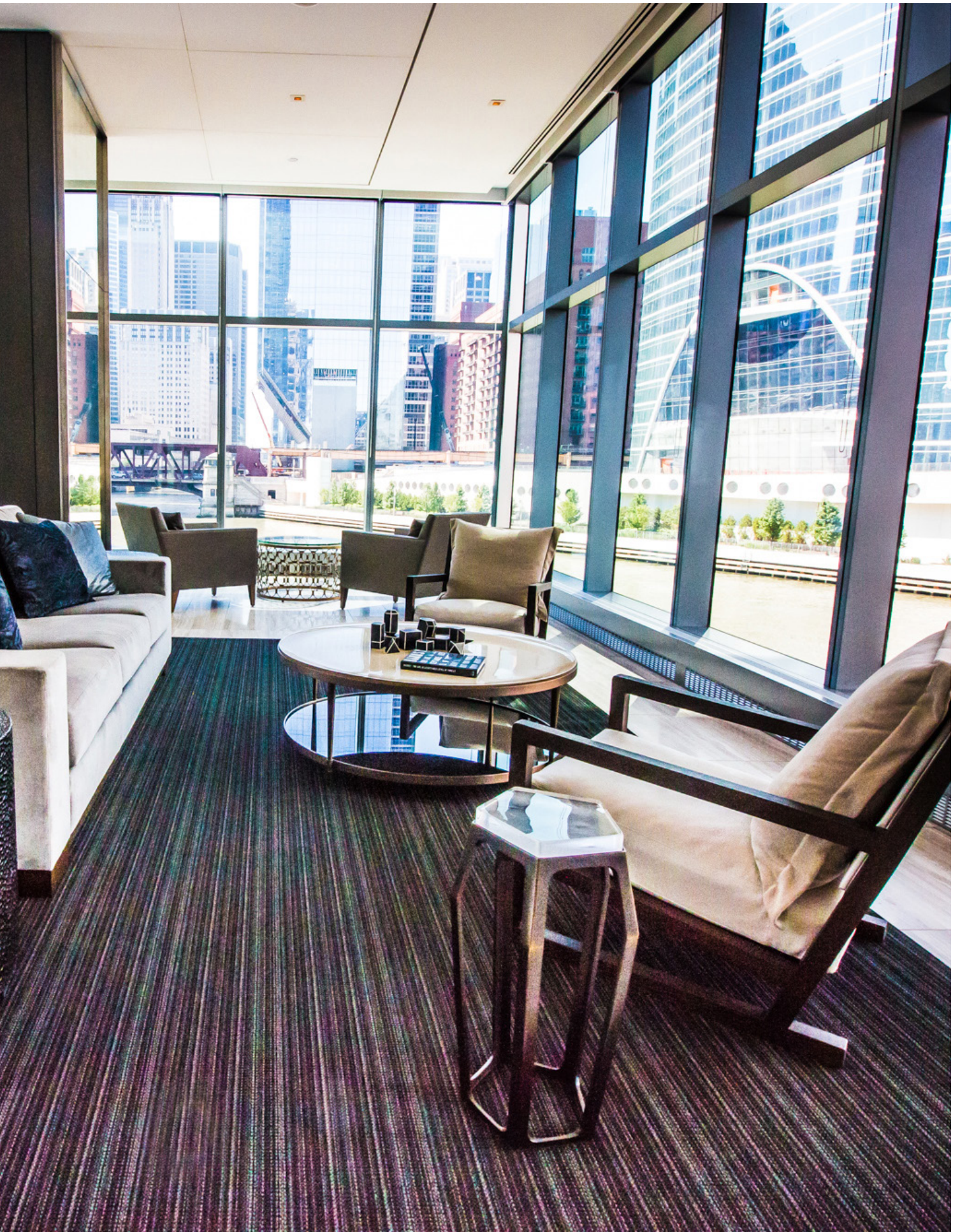
BOS
SHOWCASE

www.BOS.com

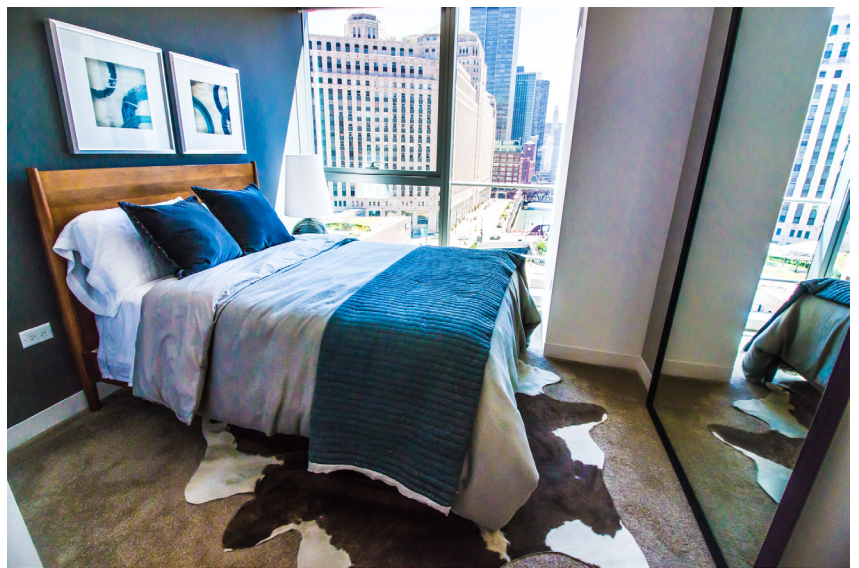
PROJECT OVERVIEW

Elegantly responding to the confluence of the Chicago River, Wolf Point West's design maximizes views in every direction rising 46 stories high. Each amenity at Wolf Point West has been thoughtfully designed to deliver both remarkable beauty and flawless functionality. Amenity spaces feature an eclectic blend of mid-century modern design, rich tones, elegant materials, signature works of art and classic furnishings. BOS furnished and installed common areas including business center, golf simulator room, lobby, sales and management center, resident lounge, pool deck, roof terrace and model units.









PROJECT DETAILS

-  **ARCHITECTURE AND DESIGN**
BKL Architecture
-  **PROJECT MANAGEMENT**
Hines
-  **PROJECT DATE**
2016



CLIENT PROFILE: WOLF POINT WEST

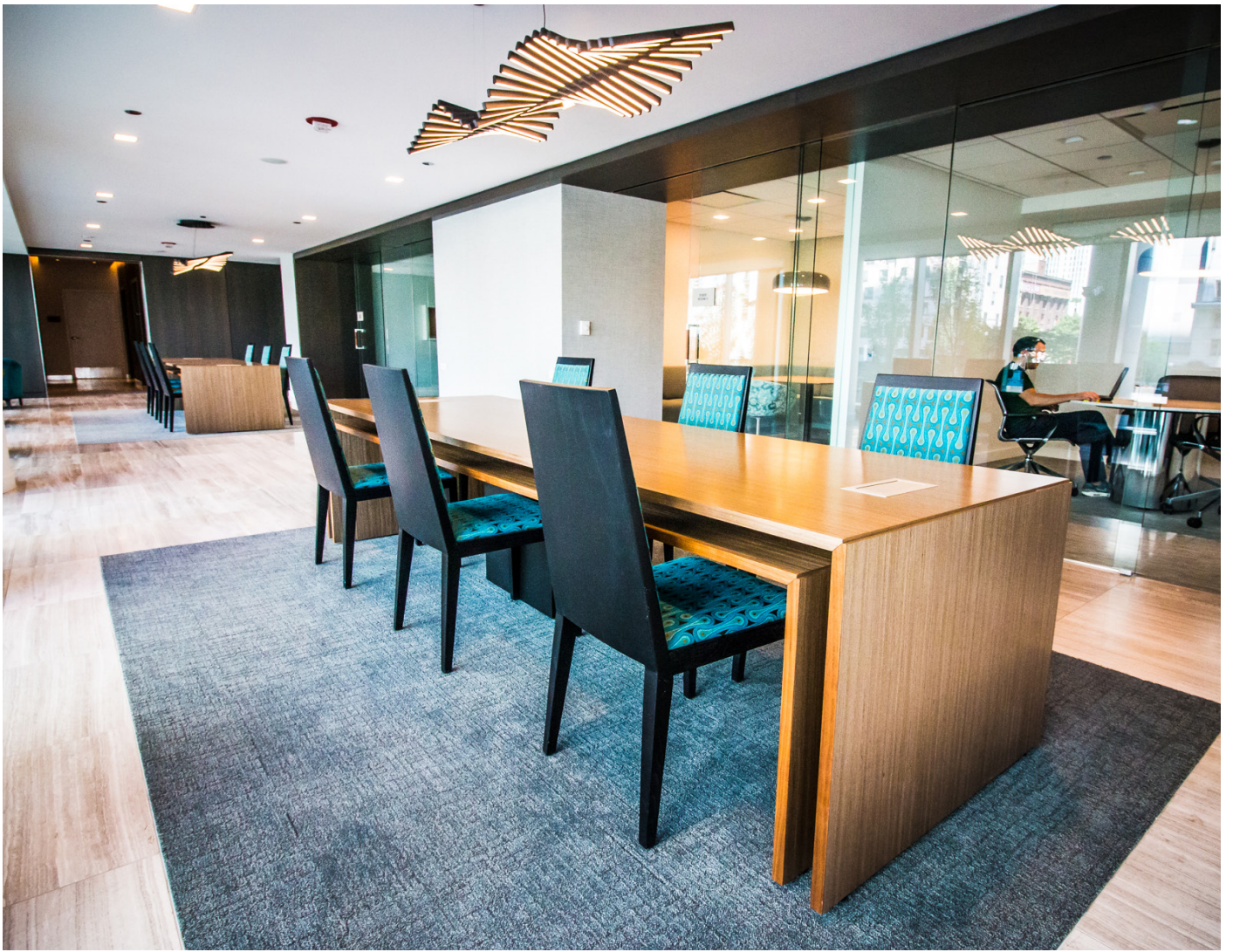
Graciously meeting the ground on the banks of the Chicago River, Wolf Point West offers a haven in the heart of the city. Our signature residential development is carefully curated for a luxurious city living experience with sweeping, panoramic views of the Chicago skyline. These brand new, stunning River North apartments feature refined architectural detailing with duotone, soft-close cabinetry, quartz countertops, undermount sinks and wood grained flooring. Residents at Wolf Point West have access to exceptional features, as well as, a wide range of exclusive offers.















SEE FOR YOURSELF



Take a visual tour of the Wolf Point West space by visiting <http://www.bos.com/showcase/wpw/>



Integrity.
Inspiration.
Commitment.

CONTACT DETAILS

877.267.0267
info@bos.com
www.bos.com

ROSELLE HEADQUARTERS

501 South Gary Avenue
Roselle, IL 60172
877.267.0267

CHICAGO SHOWROOM

328 South Jefferson Street
Suite 110
Chicago, IL 60661
312.670.8530



BOSworkspaces
bos_workspaces
boscontract
business-office-systems