



 **Kellen**

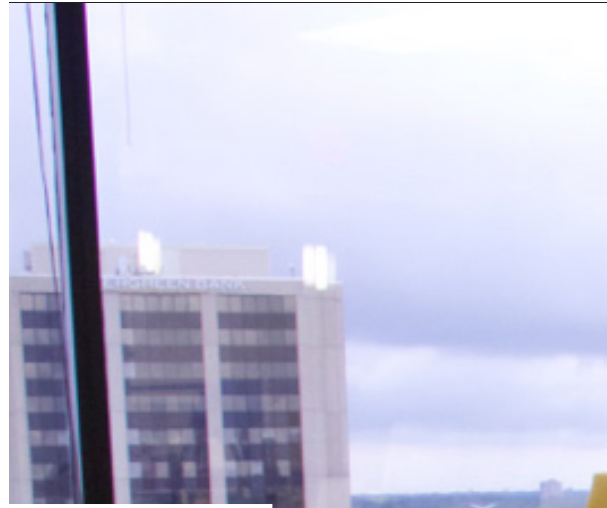
FEATURED WORKSPACE

BOS
SHOWCASE

www.BOS.com

PROJECT OVERVIEW

Kellen was interested in creating a space that would be open, promote collaboration among their employees, and provide a template of all of their future offices. Attracting and Retaining employees was also a key initiative in this endeavor. The result was a very satisfied client. BOS worked with Tvsdesign to develop a furniture package that met Kellen's budget, but did not take away from the design intent of the design firm. BOS was worked with TVS from the very beginning (space planning, furniture selection, order placement, coordinating delivery, installation and punchlist) to build out the 30,000 square foot space.







PROJECT DETAILS

- PROJECT SIZE**
30,000 Square Feet
- ARCHITECTURE AND DESIGN**
Tvsdesign
- REAL ESTATE BROKER**
NAI Hiffman
- PRIMARY MANUFACTURER**
Haworth
- PROJECT DATE**
September 2015





CLIENT PROFILE: KELLEN

Kellen supports, guides and promotes the professions and industries that impact people around the world every day. From the safety of the food we eat to the soundness of the buildings we live and work in to assurances about healthcare issues, we are committed to the success of the organizations we work with because we care about the many ways their work serves others. Our 300 professionals around the globe are specially trained in areas ranging from engineering to nutrition, from integrated communications to global consulting, and of course, in association management and meeting planning. And while association management is what we're best known for – it's just one part of what we do.











SEE FOR YOURSELF



Take a visual tour of the Kellen space by visiting
<http://www.bos.com/showcase/kellen/>





From insight to implementation, we will help you expand your programs, maximize your impact and resolve the most complex challenges.

~ Kellen



Integrity.
Inspiration.
Commitment.

CONTACT DETAILS

877.267.0267
info@bos.com
www.bos.com

ROSELLE HEADQUARTERS

501 South Gary Avenue
Roselle, IL 60172
877.267.0267

CHICAGO SHOWROOM

328 South Jefferson Street
Suite 110
Chicago, IL 60661
312.670.8530



BOSworkspaces
bos_workspaces
boscontract
business-office-systems